



ISD Virtual Learning

High School Psychology

April 22, 2020



Psychology

Lesson: April 22, 2020

Objective/Learning Target:

Students will understand causes and signs associated with schizophrenia.

Warm Up



Warm Up

Read the letter.

Do you think the person who wrote it would be diagnosed with schizophrenia?

Why or why not?

EXPLORING PSYCHOLOGY

Word Salad

A woman was delighted to receive a letter from her son abroad, but distraught when she read it: “Dear mother . . . I am writing on paper. The pen I am using is from a factory called Perry and Co. The factory is in England. The city of London is in England. I know this from my school days. Then I always liked geography. My last teacher in that subject was Professor August A. He was a man with black eyes. There are also blue and grey eyes and other sorts too. I have heard it said that snakes have green eyes. All people have eyes. There are some, too, who are blind.”

—from *The Human Mind Explained*, edited by Susan A. Greenfield, 1996

Lesson Activity

Use the attached notes and textbook to answer the questions on the following page.

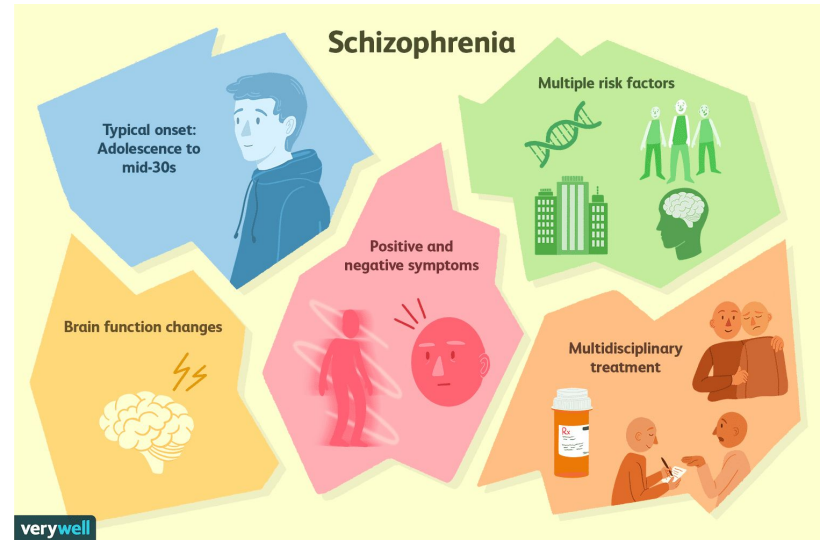
It starts on p. 465 in the textbook.

[Textbook Link](#)

[Schizophrenia Notes](#)

Practice

1. What are 5 major types of schizophrenia?
2. What is schizophrenia?
3. What are some causes of schizophrenia?
4. What was the original term for schizophrenia?
5. What are some positive and negative symptoms associated with schizophrenia?



Practice

1. What are 5 major types of schizophrenia?
2. What is schizophrenia?
3. What are some causes of schizophrenia?
4. What was the original term for schizophrenia?
5. What are some positive and negative symptoms associated with schizophrenia?

Answers:

1. Disorganized, catatonic, paranoid, residual, indifferencial
2. Group of disorders characterized by confused and disconnected thoughts, emotions, and perceptions
3. Environmental, genetic, biomechanical
4. Dementia Praecox
5. Positive: delusions of grandeur, thought insertion, delusions of reference, etc

Negative: reduced emotions, social withdrawal, problems starting and continuing activities

Reflection

The link is a simulation of what someone with schizophrenia goes through.

[Schizophrenia Simulation](#)